

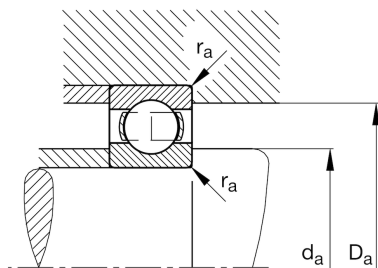
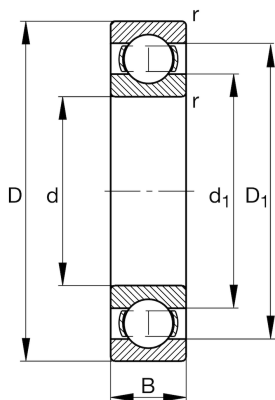
FAG

61822-Y

Deep groove ball bearing

Schaeffler ID:
0096199170000Deep groove ball bearing 618.-Y, single
row, brass sheet metal cage

Technical information

**Main Dimensions & Performance Data**

d	110 mm	Bore diameter
D	140 mm	Outside diameter
B	16 mm	Width
C_r	30.000 N	Basic dynamic load rating, radial
C_{0r}	30.500 N	Basic static load rating, radial
C_{ur}	1.650 N	Fatigue load limit, radial
n_G	8.500 1/min	Limiting speed
n_{gr}	4.100 1/min	Reference speed
	0,499 kg	Weight

Dimensions

r_{min}	1 mm	Minimum chamfer dimension
D_1	130,6 mm	Shoulder diameter outer ring
d_1	119,7 mm	Shoulder diameter inner ring

Mounting dimensions

$d_{a min}$	114,6 mm	Minimum diameter shaft shoulder
$D_{a max}$	135,4 mm	Maximum diameter of housing shoulder
$r_{a max}$	1 mm	Maximum fillet radius

Calculation factors

f_0	16	Calculation factor
-------	----	--------------------

Temperature range

T_{min}	-30 °C	Operating temperature min.
T_{max}	150 °C	Operating temperature max.